

GLENS COMMUNITY ASSOCIATION



Newsletter – Spring 2011

THE GLENS COMMUNITY ASSOCIATION ANNUAL GENERAL MEETING

“ARE WE BEING HEARD?”

Monday, June 13th, 2011, 7 P.M.

**The MET,
(Metropolitan Bible Church)
2176 Prince of Wales Drive**

- Meet politicians, city staff and community police
- POW widening and traffic concerns
- Issues in the Glens - creative solutions coming!
- Would we like that to have our water supplies protected? Clean Water Act Can Help!
- Have your concerns been addressed?
- Are coyotes bothering you?
- Pick-up your water testing bottle
- Enjoy a good discussion with your community representatives and neighbours

SPEEDING THROUGH THE GLENS

There has been increased police presence on Merivale and MacFarlane. Almost daily we see someone stopped and ticketed, yet the speeding continues. The display unit on Merivale, deployed on November 24, 2010 between 7:00 a.m. and 4:00 p.m., recorded 68 drivers between 71 km/h and 75 km/h, 47 between 76 and 80 km/h, 19 between 81 and 85 km/h and 5 between 86 and 89 km/h. The speed of 1463 vehicles was recorded. City staff have suggested this area would be better served with a speed limit other than 50 km/h. GCA received many reports of concern. Pedestrian safety, difficulty turning, and problems merging with the traffic have been cited. Country Place and Glens are exploring ways to allow greater pedestrian safety. Both communities reject a speed increase.

PRINCE OF WALES - 1st REPORT GOING TO THE COUNCIL

It has been said, that earlier plans to align Hwy 16 close to the Rideau River "did not survive local scrutiny, as too many neighbourhoods would have been disrupted". This observation is still valid and many communities located along or fronting Prince of Wales are apprehensive about the impact the

widening will have on their properties and their quality of life. Glens are greatly concerned with the possibility of expropriation affecting the value of resident's properties and the fact that changes resulting from the road widening will affect the quality of life for years to come. With expropriation, property owners may be forced to accept municipal servicing. Although the community has been assured the actual connection will come at no cost to the property owners, there is the possibility of increased property taxes, and hidden costs of conversion. It is our understanding that those unwilling to accept municipal servicing, and yet unable to continue their reliance on private servicing, will be given the option of having their property expropriated by the city.

GCA recommendations include: staying within the existing Right of Way, no sidewalk, use of sound barriers (especially for corner lots) and preservation of mature vegetation. The community is concerned with the impact of construction on the aquifers, well and septic, and the changes in traffic patterns (speeding, cut through traffic and increased traffic volume on the neighbourhood streets). Turning restrictions on Pineglen, Belledune, Brookdale and signage directing traffic to collector or arterial roads in the area (and off the residential streets) might be considered.

Residents along the POW and Waterbend are concerned with ingress and egress from their properties. The current proposal suggests right in right out access. Waterbend residents considering turning left onto POW would have to make u-turns at the Hunt Club intersection. U-turns at this intersection are currently prohibited as being too dangerous. From their property, POW residents would need to cross two lanes of southbound traffic to access northbound lanes using median as a turning lane.

The findings and the recommendations will be presented at the Transportation Committee on May 4th. Residents may register for 5 minutes presentations.

COMMUNITY CLEAN UP!

Saturday 30 April, 2011

•Pineglen Park 10a.m. AND
•Grenfell Park 10a.m.

Rain Date Sunday 01st May, 2011

Bring your own gloves, rakes and other tools you may want.
Garbage bags will be supplied!



Need to know more?

Pineglen: Contact Wilma at wilma_mccormack@hotmail.com

Grenfell Glen: Contact Marilyn at mjbooth@sympatico.ca

Organized by the Glens Community Association <http://www.glenscommunity.ca/>
A City of Ottawa initiative http://www.ottawa.ca/residents/environment/community/capitalcleaning/index_en.html

CLEARVIEW ♦ GRENFELL GLEN ♦ PINEGLEN

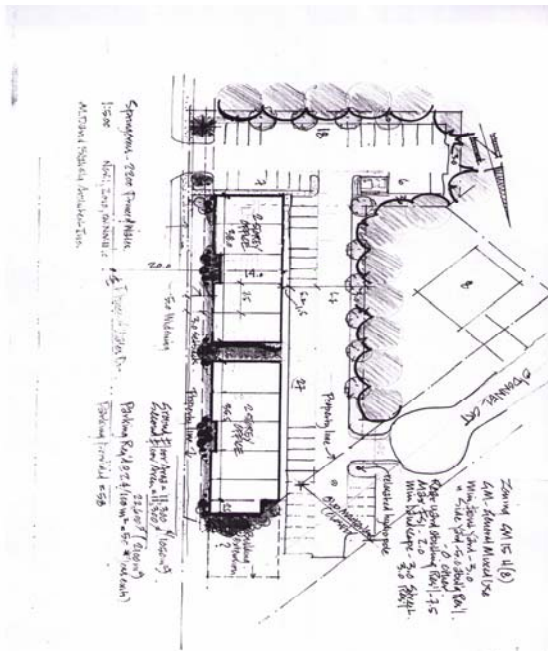
GLENS GARAGE SALE - JUNE 11, 2011



Glens and Country Place Garage Sale is coming up on Saturday, June 11, 2011 from 9:00a.m. - 3:00p.m. (While 9:00a.m. is the "official" start time, sellers and buyers are usually out much earlier). Signs will be displayed to direct customers.

2200 PRINCE OF WALES

The Springcross Properties Inc. is proposing to develop the site of the former ESSO station. The site (about 0.27 hectares) has been remediated. Springcross proposes a condominium office townhouse development. The site plan calls for about 10 two storey townhomes (with basements) and 58 parking spaces. The proposal calls for access from POW (right in right out). The draft site plan shows an entrance located at the POW and an exit (only) from O'Donnell Crescent. The planner in charge recommends access to and from the property only from O'Donnell Crescent due to traffic concerns. In principal, the association does not oppose this development as the area is zoned commercial. However, we have concerns related to opening access to O'Donnell Crescent.



VIA RAIL AND THE GLENS

Following the dramatic clear-cutting of the VIA Rail right of way in 2010 there have been several meetings between representatives of the GCA and personnel from VIA Rail. Convened by MP Pierre Poilievre, the meetings resulted in commitments from VIA Rail on a number of issues. While some issues were addressed quickly, others will require on-going discussion.

Drainage was one of the first issues addressed and the drainage ditches were re-profiled both north and south of the track bed to promote water flow. Residents are monitoring water levels this spring and will contact VIA Rail personnel if water is backing up. The GCA and residents will be notified when VIA begins regular water level inspections in the spring.

VIA Rail repaired some damage to personal property such as fences and pools. Some of this work was completed and some will be deferred until summer, when the full extent of damage to pools can be assessed.

While the logistics have not been finalized, VIA Rail has agreed to plant a row of trees on resident's property, adjacent to the VIA safety fence. These trees will serve as a sound and visual barrier. During spring planting season, a representative from VIA Rail will visit any resident who has indicated an interest in obtaining trees. The VIA representative will provide an agreement outlining the terms and conditions for this program, and will offer individual residents a choice of three tree species. Cedar will be one choice. The other two species will be selected based on ability to provide a year round privacy screen, resistance, etc. Two possibilities may be juniper and blue spruce.

VIA Rail personnel have met with representatives from both the National Capital Commission and the Rideau Valley Conservation Authority. While neither organization has jurisdiction on private property or the VIA right-of-way, they agreed to work with VIA Rail to provide suggestions such as appropriate tree species for the Glens area. While the budget and project plans do not include any planting on the VIA property, this possibility continues to be examined for the right of way between Pineglen and Grenfell Crescents. VIA Rail has committed to keeping residents apprised regarding this possibility. Natural re-growth will be allowed so that the visual and sound barriers will gradually return.

The issue of vegetation control on the rail bed is likely to be on-going. Complete vegetation control on the railway ballast is mandatory for safe operating conditions and annual spraying of rail beds in Canada and other countries has been done for more than sixty years. During this time, no negative health effects have been linked to this practise. At the moment, a more environmentally friendly steam system to control vegetation has been dismissed due to cost and the required frequency of treatment. Each spring, a combination of products, approved by Health Canada and varied from year to year so that plants do not develop a tolerance, will be applied by a registered contractor under ideal weather conditions (no wind or rain) and according to the requirements for specialized areas (wet areas, wells, etc.) The next application will be in May 2011. Since the spraying is weather dependent, there will be little notice of the actual day. VIA Rail has requested at least 24 hours notice from their contractor and has committed to pass this information to our community as soon as they receive it.

Please inform the Community Association if your request for repairs has been overlooked or you need additional instructions; indicate your interest in receiving updates regarding tree planting, fencing and spraying, and ensure that we have your name and contact information.

PINEGLEN PARK SECURITY

A Proactive Video (PAV) system might be installed in Pineglen Park. It turns on at 11:00 pm when the park is closed for public. Any person entering the area will cause an alarm. The alarm will be sent to the City of Ottawa's Security Operations Centre, who will use the camera to identify what is happening and apply appropriate action.

KEEPING YOU POSTED – THE CHALLENGE IS ‘HOW?’

Glen residents, if you would like to be "kept in the loop" during the year, please send us your e-mail address or correct your old one. You will be notified of various topics from spring clean-up, and coyote sightings, to opportunities to voice your opinion on issues like bus routes, but our liaison reps have both asked 'How can we notify you efficiently?' There are about 550 homes in the Glens and distributing a flyers to each home is time consuming and increasingly costly. Sending messages by e-mail is quicker and allows easy access. Distribution lists will be set up to protect your privacy and, of course, we will not share your e-mail address. No one can 'reply to all' and reach you. Those who have no e-mail, you can always call an executive member. The phone numbers are listed in the newsletter

OUR HERITAGE

Glens was carved out from the Greenbelt in the early 1950s and 60s and the neighbourhood has changed very little in the last few decades, preserving private servicing and its rustic setting with no sidewalks, few streetlights and aged pine trees. Many original owners are still living among us in this community of 550 homes, scattered across spacious lawns and hidden by trees and mature hedges. Glens were home to the Ambassador of Cameroon, former football player Russ Jackson, and other notables. Few writers and artists are also living among us.

BEHIND THE BADGE

Glens have produced many distinguished people. Those interested in a history of policing in Carleton County will find it captivating to read the book written by our neighbour, former chief of police Ewart "Gus" Wersch. Printed in 2009, this book contains many fascinating pictures and memories lovingly compiled by Gus. The book can be ordered by calling Gus at 613 226 3417 or at: www.BehindTheBadge.ca

LEAF AND YARD WASTE COLLECTION

Starting Monday, April 4th, leaf and yard waste will be collected every week. It will continue during the spring, summer and fall.

Provincial News

PROVINCIAL ELECTION

The next provincial general election will be held on October 6, 2011. Elections in Ontario employ a "first-past-the-post" voting system. Ontario a traditional Canada's economic engine is now "have-not province" receiving equalization payments. The right to vote is a cornerstone of democracy and a message to governments and politicians. In October, we will choose who and how will spend our tax money and solve Ontario's problems. The list of issues is long: energy, education, water, land, environment, health, taxes and services. Please vote!!!! and be represented well!!!!

Community Businesses for Hire

Free service for community residents and youth seeking summer employment.

"Serving you in the Community for all of your Real Estate needs"



Sue Briard
Sales Representative

COLDWELL BANKER
COBURN REALTY BROKERAGE

613-226-8790 OFFICE
613-220-3911 DIRECT LINE
800-472-6512 TOLL FREE
613-226-4392 FAX

1415 Woodroffe Avenue
Ottawa, Ontario, K2C 1V9
sue@coburnrealty.com

Each Office is Independently Owned And Operated

PREMIER OFFICE REALTOR
MLS MULTIPLE LISTING SERVICE



**Student for Hire
to assist with all
your yard works
call Martin**

613 225 3187



"YOUR LANDSCAPE SOLUTION"

HEDGE\SHRUB PRUNING
GARDEN REJUVENATION
YARD MATIENANCE

INTERLOCK & NATURAL STONE
ORGANIC VEGETABLE GARDENS
DIY PROJECTS

Todd Davies for fast friendly quality work

CALL NOW 613-263-8368

**ONLINE AND AROUND THE
CORNER.**

Brian J Kelly
Financial Advisor
6 Antares Drive, Phase 2
Unit 11
Ottawa, ON K2E 8A9
613-224-4242

www.edwardjones.com
Member – Canadian Investor Protection Fund

Edward Jones
MAKING SENSE OF INVESTING



GLENS COMMUNITY RATE \$75/HR

Adams Plumbing
SPECIALIZING IN THE OLDER HOME

RUSSELL ADAMS PLUMBER
JOHN ADAMS MASTER PLUMBER

613-226-5685

Important Contacts

GLENS TENNIS CLUB - 2011 Season
www.glenstennisclub.ca or call
Amie Lee at 613 224 3096
Richard Lovatt at 613 225 3636

CITY OF OTTAWA call 311
When calling 311 remember to get call
number for follow ups

PROVINCE OF ONTARIO call 211

YOUR ELECTED OFFICIALS

Pierre Poilievre M.P.
250-B Greenbank Road
Nepean ON K2H 8X4
Ph: 613 990-4300; Fax: 613 990-4333
poilip@parl.gc.ca
www.fightingforyou.ca

Lisa MacLeod M.P.P. Nepean-Carleton
10-3500 Fallowfield Road
Nepean, Ontario K2J 4A7
Ph: 613 823-2116
Fax: 613-823-8284
lisa.macleodco@pc.ola.org
http://lisamacleod.com/en/

Keith Egli (Knoxdale-Merivale Ward)
Tel: 613-580-2479
Fax: 613-580-2519
Keith.Egli@ottawa.ca
ward issues: ward9@ottawa.ca
http://keithegli.ca/

Open House , April 26, 2011, 7p.m. - 9p.m.
Nepean Sportplex, Hall C&D

Glens Community Association Executive Committee Members 2010/2011

President	Agnes Warda	226-9576
Vice President	Andy Powers.....	225 9930
Secretary	Susan Briard.....	226-8790
Treasurer	Betty-Anne Wilks.....	226-5021

Directors		
Education	Mary O'Donohue	225-7984
Media/Web	Paul Dickie.....	224-8014
Planning	Susan Briard.....	226-8790
Servicing	Elizabeth O'Connor.....	225-3187

Directors at Large		
(Protocol)	Penny Hammell.....	224-5159
	Nardin Ghahary.....	224-8014

Task Force on		
Clean Water	Dick de Jong.....	224-5593

Community		
Events	Wilma McCormack.....	274-0143
Community Liaison		
Grenfell	Marilyn Booth.....	730 3879
Community Liaison		
Pineglen	Michele Lajeunesse.....	225-9630
Neighbourhood		
Watch	Nardin Ghahary.....	224-8014

Glens Community Association
P.O. Box 65095
Merivale P.O.
Nepean ON K2G 5Y3
E-mail: executive@glenscommunity.ca
www.glenscommunity.ca

NEIGHBOURHOOD WATCH REMINDER

To report:	Call
• . a life-threatening emergency or crime in progress.....	911
• . other emergency or an ongoing incident (no violence or threat of violence).....	230-6211
• . an incident (to report a theft, missing person or stolen vehicle).....	236-1222, ext.7300